

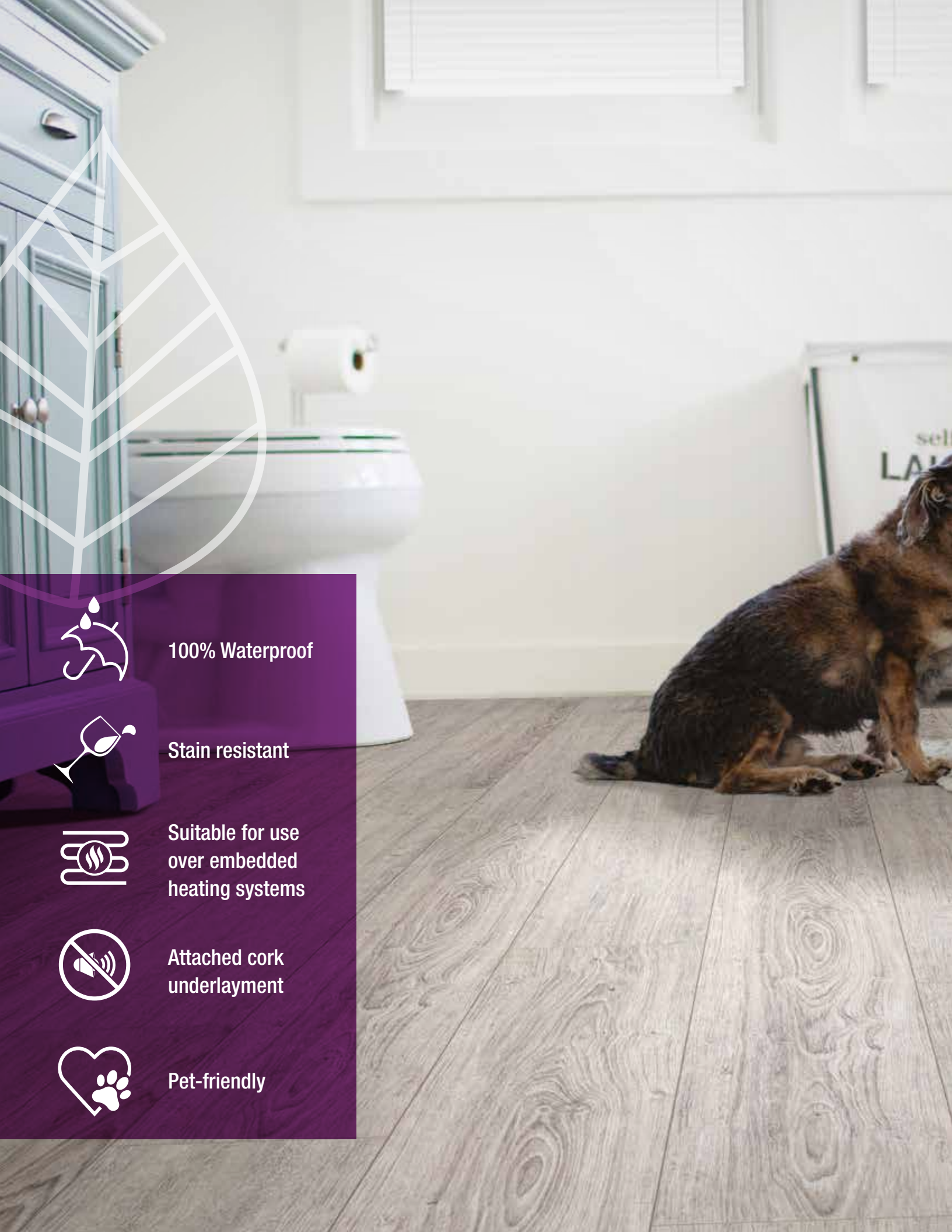


IMPERVIOTM

ENGINEERED
WATERPROOF
FLOORING



HEALTHY
HOMETM
by Beaulieu



100% Waterproof



Stain resistant



Suitable for use
over embedded
heating systems



Attached cork
underlayment



Pet-friendly



IMPERVIO™

IMPERVIO™ is the newest technology in waterproof and pet-friendly floors that provide peace of mind when installed anywhere in your home.

A certified
HEALTHY HOME™
product from Beaulieu.

**Perfected for
your lively household**

IMPERVIOTM LXi



HEALTHY
HOMETM
by Beaulieu

LUX HAUS

Multiple widths & lengths | Attached cork underlayment

This collection will give your home a sense of luxury and grandeur with the extra-long and extra wide planks and stunning wood visuals. Rustic and refined options are available in the latest European-inspired color trends.

WARRANTY

Residential: Lifetime Limited
Light Commercial: 10 Years
Waterproof: Lifetime Limited
Pet Warranty: Lifetime Limited

FEATURES

Minimal floor preparation needed
Easiest installation method
Easy to maintain
Coordinating moldings available

INSTALLATION

Simple floating installation
Välinge™ 5G & 2G locking system
Minimizes telegraphing from imperfect sub-floors
Suitable for use over embedded heating systems



6014 - Rustic Taupe



6012 - Gingersnap



6015 - Tanglewood



6011 - Grandeur



6013 - Sienna



6040 - Almond



6010 - Cocoa



6038 - Pecan



6006 - Creek Bend



6007 - Chinkapin



6009 - Kola



6008 - Sesame

6014 - Rustic Taupe

Registered Embossed



6012 - Gingersnap

Registered Embossed



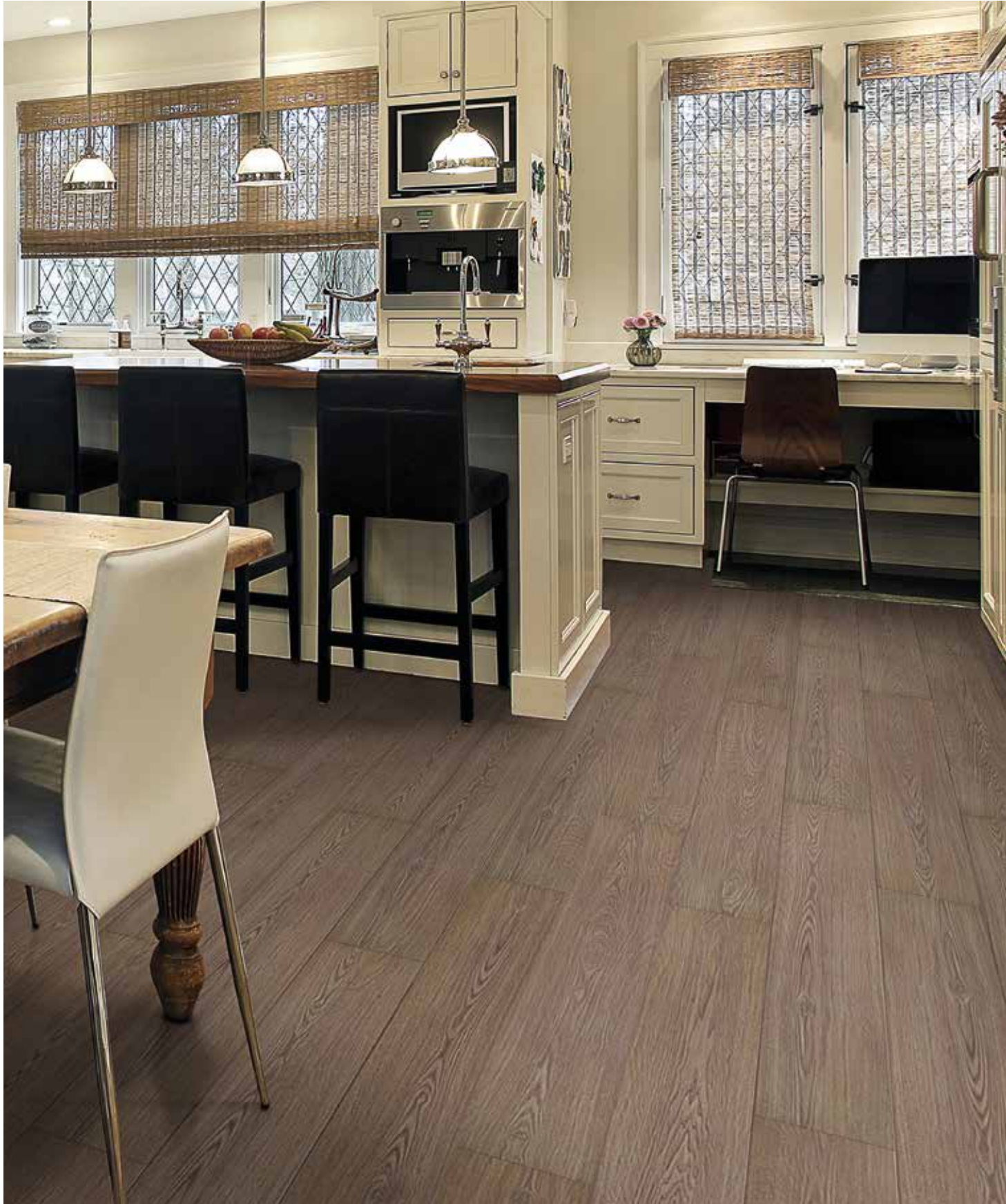
6015 - Tanglewood

Registered Embossed



6011 - Grandeur

Registered Embossed



6013 - Sienna

Registered Embossed



6040 - Almond

Handscraped



6010 - Cocoa

Registered Embossed



6038 - Pecan

Handscraped



6006 - Creek Bend

Registered Embossed



6007 - Chinkapin

Registered Embossed



6009 - Kola

Registered Embossed

Multiple widths : 5" (127 mm)
7" (178 mm)
8.976" (228 mm)

Multiple lengths : 35.827" (910 mm)
72.047" (1830 mm)



6008 - Sesame

Registered Embossed



| | |
|---------------------------|-------------------|
| Multiple widths : | 5" (127 mm) |
| | 7" (178 mm) |
| | 8.976" (228 mm) |
| Multiple lengths : | 35.827" (910 mm) |
| | 72.047" (1830 mm) |

IMPERVIOTM xi



**HEALTHY
HOMETM**
by Beaulieu

ADVENTURE

Attached cork underlayment

Discover the look of real wood in this new collection. Installed over existing and new floors, the waterproof products in this collection can go in any room, a great option for active households.

WARRANTY

Residential: Lifetime Limited

Light Commercial: 10 Years

Waterproof: Lifetime Limited

Pet Warranty: Lifetime Limited

FEATURES

Look of real wood

Attached cork underlayment

INSTALLATION

Simple floating installation

Välinge™ 2G locking system

Suitable for use over
embedded heating systems



ISC Certified



6032 - Kilimanjaro



6019 - Scafel Pike



6035 - Pyrenees



6018 - Whitney



6031 - Machu Picchu



6033 - Mont Blanc



6026 - Everglades



6028 - Olympus



6029 - Everest



6027 - Grand Teton



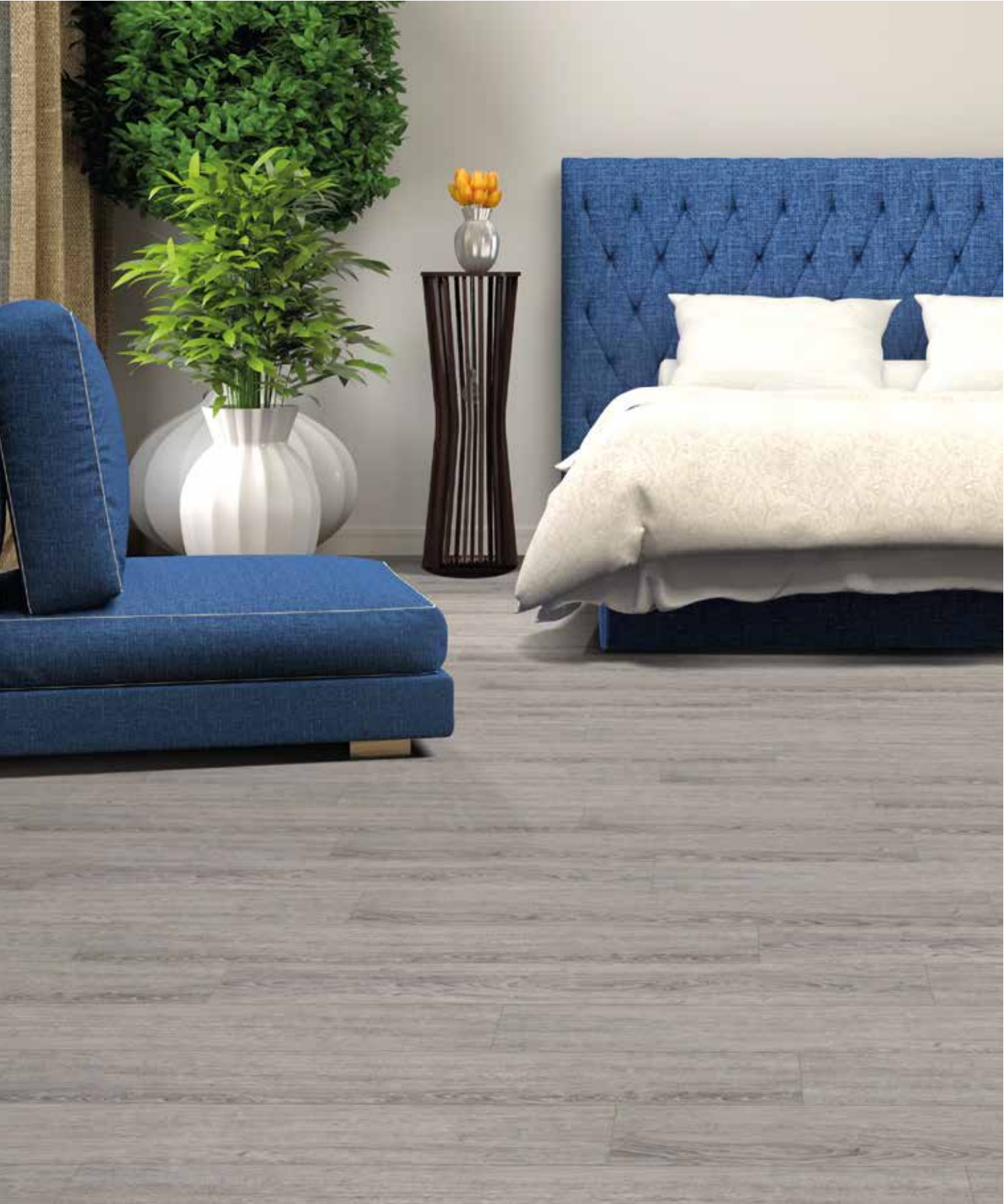
6017 - Yosemite



6016 - Kenai

6032 - Kilimanjaro

Registered Embossed



6019 - Scafel Pike

Medium Embossed



6035 - Pyrenees

Registered Embossed



6018 - Whitney

Registered Embossed



6031 - Machu Picchu

Registered Embossed



6033 - Mont Blanc

Registered Embossed



6026 - Everglades

Handscraped



6028 - Olympus

Medium Embossed



6029 - Everest

Medium Embossed



6027 - Grand Teton

Handscraped



6017 - Yosemite

Medium Embossed



6016 - Kenai

Handscraped



IMPERVIO™



**HEALTHY
HOME™**
by Beaulieu

THE NEW STANDARD

The look of real hardwood

The New Standard collection is pushing the limits of flooring: 12 stunning designs with the look, the graining and the character of real hardwood. Transform your décor with a genius look that will never go out of style!

WARRANTY

Residential: 25-Year Limited

Light Commercial: 5 Years

Structural Integrity: Lifetime Limited

Waterproof: Lifetime Limited

FEATURES

Look of real wood

Dimensionally stable

Durable PVC wear layer

INSTALLATION

Simple floating installation

Suitable for use over
embedded heating systems

Can be glued down



NSC Certified



733 - Surfside



852 - Buxton



872 - Fiji



955 - Hatteras



949 - Sandbridge



883 - Spalted



967 - Promenade



988 - Tarboro



999 - Santa Cruz



732 - Heritage



888 - Riverbend



722 - Wildwood

733 - Surfside

UV-Acrylic Polyurethane / Cathedral Embossing



852 - Buxton

UV-Acrylic Polyurethane / Cathedral Embossing



872 - Fiji

UV-Acrylic Polyurethane / Cathedral Embossing



955 - Hatteras

UV-Acrylic Polyurethane / Cathedral Embossing



949 - Sandbridge

UV-Acrylic Polyurethane / Cathedral Embossing



883 - Spalted

UV-Acrylic Polyurethane / Cathedral Embossing



967 - Promenade

UV-Acrylic Polyurethane / Cathedral Embossing



988 - Tarboro

UV-Acrylic Polyurethane / Cathedral Embossing



999 - Santa Cruz

UV-Acrylic Polyurethane / Cathedral Embossing



732 - Heritage

UV-Acrylic Polyurethane / Cathedral Embossing



888 - Riverbend

UV-Acrylic Polyurethane / Cathedral Embossing



722 - Wildwood

UV-Acrylic Polyurethane / Cathedral Embossing



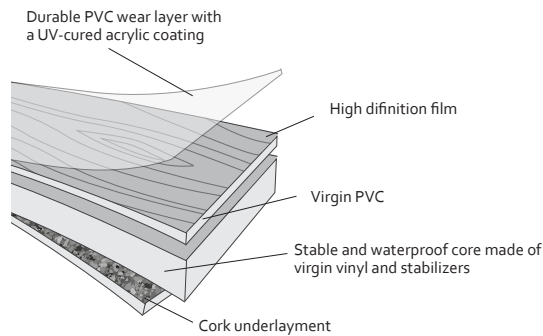


SPECIFICATIONS



ABOUT

IMPERVIO™



IMPERVIO™ is an engineered waterproof flooring that is impervious to almost anything in your home. This innovative and pet-friendly product helps to provide peace of mind. Its durable top layer protects your beautiful floors from scratches and everyday traffic. These easy-to-install and easy to maintain planks come with a lifetime waterproof warranty so rest assured that Beaulieu has you covered for your active lifestyle.

ADVANTAGES



100% WATERPROOF

No more worries about products being damaged by water in your home.



STAIN RESISTANT

Easy to clean so you can spend more time doing what you love.



SUITABLE FOR USE OVER EMBEDDED HEATING SYSTEMS

Provides a warm underfoot sensation.



ATTACHED CORK UNDERLAYMENT

Quiet and comfortable for your whole family as well as naturally resistant to mold and mildew.



PET-FRIENDLY

Flooring made to enjoy life with your furry companion.

Impervio hides subfloor imperfections, can be installed even over existing floors and does not require expansion moldings.

DISPLAYS

Engineered Waterproof Flooring (EWF) is a new luxury vinyl product category from Beaulieu offering a comfortable, quiet and warm floor covering that can be installed on all floor levels. As it is waterproof and easy to maintain, it is the perfect option for any room.



SINGLE TOWER
DISPLAY SIZE: 20" W x 77" H x 24" D



HARD
DISPLAY SIZE: 57" W x 73" H x 24" D



SAMPLE'S BACK



STACKER
DISPLAY SIZE (with samples):
19" W x 50" H x 31" D
DISPLAY SIZE (with samples and header):
19" W x 60" H x 31" D

SPECIFICATIONS CHART

CERTIFICATION

BLC • Floorscore

INSTALLATION METHODS

Floating • Suitable over radiant heat

| COLLECTION | SKU | COLOR | FINISH | WIDTH | WEAR LAYER THICKNESS |
|------------|------|--------------|---------------------------|---|----------------------|
| Adventure | 6016 | Kenai | HC - Handscraped | 7.087" (180 mm) | 0.022" (0.55 mm) |
| Adventure | 6017 | Yosemite | BP - Medium Embossed | 7.087" (180 mm) | 0.022" (0.55 mm) |
| Adventure | 6018 | Whitney | EIR - Registered Embossed | 7.087" (180 mm) | 0.022" (0.55 mm) |
| Adventure | 6019 | Scafel Pike | BP - Medium Embossed | 7.087" (180 mm) | 0.022" (0.55 mm) |
| Adventure | 6026 | Everglades | HC - Handscraped | 7.087" (180 mm) | 0.022" (0.55 mm) |
| Adventure | 6027 | Grand Teton | HC - Handscraped | 7.087" (180 mm) | 0.022" (0.55 mm) |
| Adventure | 6028 | Olympus | BP - Medium Embossed | 7.087" (180 mm) | 0.022" (0.55 mm) |
| Adventure | 6029 | Everest | BP - Medium Embossed | 7.087" (180 mm) | 0.022" (0.55 mm) |
| Adventure | 6031 | Machu Picchu | EIR - Registered Embossed | 7.087" (180 mm) | 0.022" (0.55 mm) |
| Adventure | 6032 | Kilimanjaro | EIR - Registered Embossed | 7.087" (180 mm) | 0.022" (0.55 mm) |
| Adventure | 6033 | Mont Blanc | EIR - Registered Embossed | 7.087" (180 mm) | 0.022" (0.55 mm) |
| Adventure | 6035 | Pyrenees | EIR - Registered Embossed | 7.087" (180 mm) | 0.022" (0.55 mm) |
| Lux Haus | 6006 | Creek Bend | EIR - Registered Embossed | 8.858" (225 mm) | 0.022" (0.55 mm) |
| Lux Haus | 6007 | Chinkapin | EIR - Registered Embossed | 8.858" (225 mm) | 0.022" (0.55 mm) |
| Lux Haus | 6008 | Sesame | EIR - Registered Embossed | 5" (127 mm) 7" (178 mm) 8.976" (228 mm) | 0.022" (0.55 mm) |
| Lux Haus | 6009 | Kola | EIR - Registered Embossed | 5" (127 mm) 7" (178 mm) 8.976" (228 mm) | 0.022" (0.55 mm) |
| Lux Haus | 6010 | Cocoa | EIR - Registered Embossed | 8.858" (225 mm) | 0.022" (0.55 mm) |
| Lux Haus | 6011 | Grandeur | EIR - Registered Embossed | 8.858" (225 mm) | 0.022" (0.55 mm) |
| Lux Haus | 6012 | Gingersnap | EIR - Registered Embossed | 8.858" (225 mm) | 0.022" (0.55 mm) |
| Lux Haus | 6013 | Sienna | EIR - Registered Embossed | 8.858" (225 mm) | 0.022" (0.55 mm) |
| Lux Haus | 6014 | Rustic Taupe | EIR - Registered Embossed | 8.858" (225 mm) | 0.022" (0.55 mm) |
| Lux Haus | 6015 | Tanglewood | EIR - Registered Embossed | 8.858" (225 mm) | 0.022" (0.55 mm) |
| Lux Haus | 6038 | Pecan | HC - Handscraped | 8.858" (225 mm) | 0.022" (0.55 mm) |
| Lux Haus | 6040 | Almond | HC - Handscraped | 8.858" (225 mm) | 0.022" (0.55 mm) |

SPECIFICATIONS CHART

CERTIFICATION

GreenGuard

INSTALLATION METHODS

Floating • Suitable over radiant heat

| COLLECTION | SKU | COLOR | FINISH | WIDTH | WEAR LAYER THICKNESS |
|------------------|-----|------------|---|-----------------|----------------------|
| The New Standard | 722 | Wildwood | UV-Acrylic Polyurethane / Cathedral Embossing | 5.906" (150 mm) | 0.12" (0.3 mm) |
| The New Standard | 732 | Heritage | UV-Acrylic Polyurethane / Cathedral Embossing | 5.906" (150 mm) | 0.12" (0.3 mm) |
| The New Standard | 733 | Surfside | UV-Acrylic Polyurethane / Cathedral Embossing | 5.906" (150 mm) | 0.12" (0.3 mm) |
| The New Standard | 852 | Buxton | UV-Acrylic Polyurethane / Cathedral Embossing | 5.906" (150 mm) | 0.12" (0.3 mm) |
| The New Standard | 872 | Fiji | UV-Acrylic Polyurethane / Cathedral Embossing | 5.906" (150 mm) | 0.12" (0.3 mm) |
| The New Standard | 883 | Spalted | UV-Acrylic Polyurethane / Cathedral Embossing | 5.906" (150 mm) | 0.12" (0.3 mm) |
| The New Standard | 888 | Riverbend | UV-Acrylic Polyurethane / Cathedral Embossing | 5.906" (150 mm) | 0.12" (0.3 mm) |
| The New Standard | 949 | Sandbridge | UV-Acrylic Polyurethane / Cathedral Embossing | 5.906" (150 mm) | 0.12" (0.3 mm) |
| The New Standard | 955 | Hatteras | UV-Acrylic Polyurethane / Cathedral Embossing | 5.906" (150 mm) | 0.12" (0.3 mm) |
| The New Standard | 967 | Promenade | UV-Acrylic Polyurethane / Cathedral Embossing | 5.906" (150 mm) | 0.12" (0.3 mm) |
| The New Standard | 988 | Tarboro | UV-Acrylic Polyurethane / Cathedral Embossing | 5.906" (150 mm) | 0.12" (0.3 mm) |
| The New Standard | 999 | Santa Cruz | UV-Acrylic Polyurethane / Cathedral Embossing | 5.906" (150 mm) | 0.12" (0.3 mm) |

HEALTHY HOME™

by Beaulieu

Nothing is more important than the well-being of your family. We understand that many key decisions begin with where you live. Every time you select a Beaulieu product, we know what a privilege it is to be part of your home and we take this responsibility very seriously. This is why all of us at Beaulieu are dedicated to provide beautiful, durable and purposeful flooring that your family will enjoy for generations to come. Our promise is to constantly strive to be at the cutting edge of our industry's certifications and to always lead the way towards wholesome and safe flooring products.

Healthy Home™ is a trademark of Beaulieu Group, LLC. Healthy Home™ flooring products by Beaulieu® may contain treatments to reduce odor, soiling, staining, or contain antimicrobial treatments that are built into the flooring to inhibit the growth of odor and stain-causing mold, mildew, and bacteria solely for the protection of the flooring. The features of Healthy Home™ flooring do not protect the health of humans or animals using the flooring.

AUTHENTICATION



BEAULIEU LAB CERTIFIED

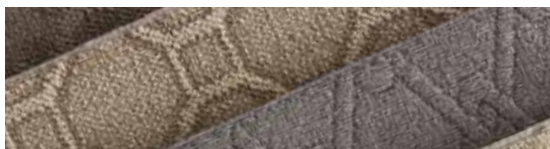
THE BLC CERTIFICATION insures that the floor covering you're buying surpasses industry quality standards. Before Beaulieu flooring reaches your home, it undergoes multiple tests which are performed by a professional laboratory.

- ✓ Low Volatile Organic Compounds (VOC)
- ✓ Wear / Abrasion resistance
- ✓ Dimensional stability



PET GUARANTEE

At Beaulieu, we know you love your pets. What you don't like as much are the hairs, smells and little accidents that accompany them. The good news is that Beaulieu floor coverings are made to last through all of your family's messy activities, including your pets'. Our carpets and hard surface floor coverings offer great durability and they all feature different benefits so you can enjoy everything life with your pets has to offer.



CERTIFICATIONS



FloorScore® is a certification program that tests and certifies hard surface flooring and flooring adhesives for compliance with rigorous indoor air quality emissions requirements.



GreenGuard Certification helps manufacturers create, and helps buyers identify, interior products and materials that have low chemical emissions, improving the quality of the air in which the products are used.

ABOUT BEAULIEU

Beaulieu is one of the largest manufacturers and distributors of wall-to-wall carpet in North America. Completing its core carpet manufacturing business, Beaulieu is now a full flooring distributor of engineered hardwood, laminate, luxury vinyl, engineered luxury vinyl and carpet tiles. All of Beaulieu's commercial and residential flooring is in the latest styles, trends, colors and patterns.



Beaulieu is committed to its customers, its employees and the environment. It strives to offer quality products in a fashion-forward and simplified manner that attract consumers and ensures their satisfaction. Beaulieu believes that its focus on innovation and strategic marketing will ensure a growth in the floor covering market share and make its brand stand out from the competition.

Beaulieu's merchandising is clean, trendy and fashion-forward. Inspired by European trends, Beaulieu's flooring styles and exclusive merchandising system engage and offer an experience to consumers. With the goal to bring flooring to the next generation of digitally-inspired shoppers, Beaulieu is confident that its diversified brand will stand strong in an evolutionary market.

Beaulieu believes that training its employees is crucial to offering its customers a quality customer service. Customers can be confident that the Beaulieu sales team will guide them in the right direction and will be able to answer any questions they may have regarding the products.

Beaulieu's goal is to be the vendor of choice and employer of choice, every time!



#FlooringIsFashion

beaulieuflooring.com |     