

Sumter Plus Resilient Trims | Direct Glue Product

Shaw is offering matching trim pieces for our **Sumter Plus** Direct Glue product. You can order trim pieces in any of the Sumter Plus colors.



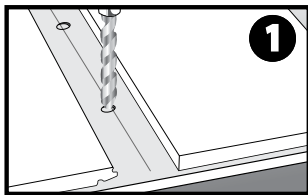
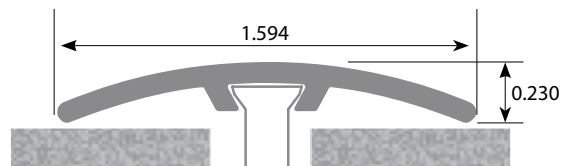
- Adjusts to almost any height
- Easy to install
- Matching visuals
- Durable and waterproof
- Great for residential & light commercial applications
- 94" Length



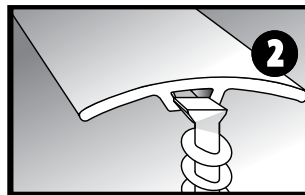
 Sustainability Through Innovation™
That's the **Shaw Green Edge**®

OmniTrim™

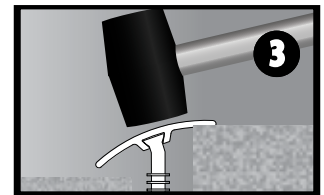
Transition adjusts to varying heights



Draw a line 3/8" from floor's edge.
Drill 1/4" holes along line
(2" - 4" from each end and every 15").



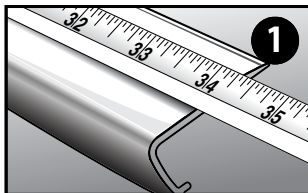
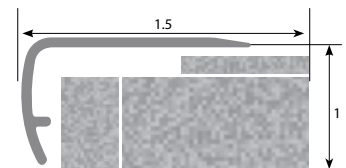
Slide anchors into slot on molding.
Align with pre-drilled holes.



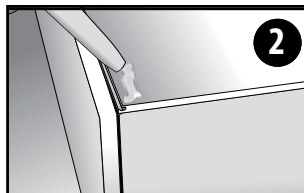
Tap down molding to required height
using a rubber mallet.

Stair Nose

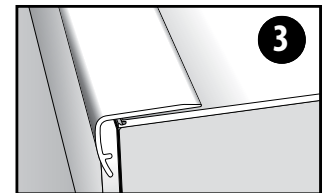
Finishes the end of a step



Measure and trim to fit.



Apply construction adhesive
generously to floor.



Push molding down onto subfloor.
Secure with finishing nails.

 **Sundries**