



AMERICAN OLEAN®  
FREEDOM OF EXPRESSION™

# scene™

COLORBODY™ PORCELAIN TILE



PRE-CONSUMER  
RECYCLED MATERIALS



TRU-EDGE



EXTERIOR  
PRODUCT

scene™

With intriguing mixed stone visuals, Scene Colorbody Porcelain delivers exquisite depth and visual variation for both commercial and residential applications. In addition to the striking aesthetics, Scene's elongated planks, which reach 48 inches in length, are a first for American Olean. Decorative accents feature a graphical interpretation of patterns found in nature. Available in two finishes, four colors and five sizes, Scene brings bold options to the design table.



## FIELD TILE



Crest SC01 - Unpolished



Shore SC02 - Unpolished



Ridge SC03 - Unpolished



Horizon SC04 - Unpolished



Crest SC01 - Light Polished



Shore SC02 - Light Polished

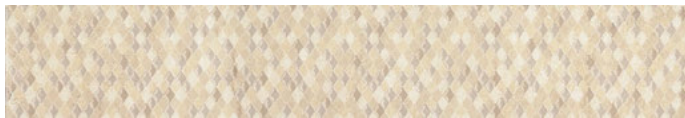


Ridge SC03 - Light Polished

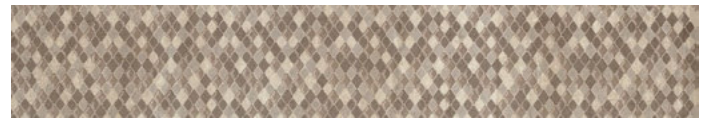


Horizon SC04 - Light Polished

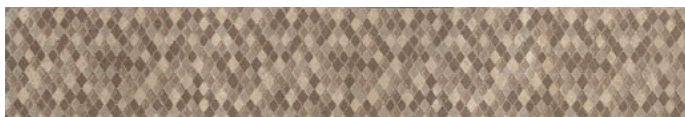
## DECORATIVE ACCENT



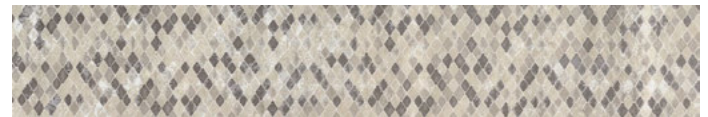
Crest SC01 4 x 24 Decorative Accent



Shore SC02 4 x 24 Decorative Accent



Ridge SC03 4 x 24 Decorative Accent



Horizon SC04 4 x 24 Decorative Accent

## SIZES, SHADE VARIATION & PRICING



**12 x 48 Field Tile**  
(11-5/8" x 46-7/8")  
(29.65 cm x 119.2 cm)  
3 pieces per carton



**8 x 48 Field Tile**  
(7-3/4" x 46-7/8")  
(19.7 cm x 119.2 cm)  
3 pieces per carton



**6 x 48 Field Tile**  
(5-3/4" x 46-7/8")  
(14.7 cm x 119.2 cm)  
6 pieces per carton



**24 x 24 Field Tile**  
(23-3/8" x 23-3/8")  
(59.44 cm x 59.44 cm)  
3 pieces per carton



**12 x 24 Field Tile**  
(11-5/8" x 23-3/8")  
(29.65 cm x 59.44 cm)  
p Pieces per carton



**4 x 24 Decorative Accent**  
(3-7/8" x 23-3/8")  
(9.7 cm x 59.4 cm)  
10 pieces per carton



**Random**  
(V4)

**Tile Thickness:** 7/16 (6 x 48, 8 x 48, 12 x 48)  
3/8 (12 x 24, 24 x 24)

**Recommended Grout Joint:** 1/8" Floor (3/16" when rectangular sizes are used in a staggered brick-joint pattern, or when multiple sizes are used in a modular pattern, overlap not to exceed 33%)

**Pricing:** High

## TRIM



**Bullnose**  
S-43C9  
3 x 12



**Cove Base**  
S-36C9  
6 x 12



**Cove Corner**  
SC-36C9  
1 x 6

Bullnose, Cove Base and Cove Corner trim are intended to coordinate with floor field tile in the normal 90-degree installation position.

Photo features Horizon Light Polished 12 x 48 in a grid pattern on the floor.

## PERFORMANCE CHARACTERISTICS

	Dynamic C.O.F. Wet	Static C.O.F.		Moisture Absorption	Breaking Strength	Abrasion Resistance	Chemical Resistance
		Wet	Dry				
Unpolished	≥ 0.42	≥ 0.60	≥ 0.70	< 0.05%	> 450 lbs.	8.0	Resistant
Light Polished	< 0.42	≥ 0.50	≥ 0.70	< 0.05%	> 450 lbs.	8.0	Resistant

Dynamic C.O.F. (Wet) value as measured by the DCOF AcuTest™ helps to assess a products suitability for a commercial environment. For more information, visit our website at [www.americanolean.com/DCOF](http://www.americanolean.com/DCOF).

### Cleaning Procedures

- Remove loose dust and dirt with a damp cloth or sponge
- Use a neutral, non-abrasive cleaner suitable for porcelain tile
- Remove cleaning solution with a clean, damp sponge or mop

### Installation Methods Backing Materials

- Concrete
- Exterior grade plywood
- Cementitious backer board

### Setting

- Latex modified dry-set mortar
- Epoxy

### Grouting

- Sanded grout
- Sanded cement grout
- Epoxy grout
- Recommended grout joint: 3/16"

## APPLICATION

	INTERIOR			EXTERIOR	
	Residential	Light Commercial	Commercial	Residential	Commercial
Floors/Patios: Covered & Uncovered	●	●	●	○	○
Walls/ Backsplashes	●	●	●	●	●
Countertops	●	●	●	●	●
Pool Linings	●	●	●	●	●
Pool Deckings	○	○	○	○	○

Suitable for exterior walls in freezing and non-freezing climates when proper installation methods are followed.

Not for use on ramps.

## NOTES

**Manufacturer Warning:** Some or all of these tiles have a dynamic coefficient of friction less than 0.42 as measured by the DCOF Acutest method. Tiles with DCOF Acutest values less than 0.42 are not recommended for use in areas with wet or slippery conditions. If such tiles are used as a walking surface where water, ice, oil, grease and/or other substances are present, such a condition could cause a reduction in foot traction and become unexpectedly slippery resulting in a fall or personal injury. See ANSI standard A137.1 section 6.2.2.1.10, available at [www.tileusa.com](http://www.tileusa.com).

**Special Installation Requirement:** For proper bonding, medium bed mortar should be utilized in installing tiles with a dimensional length size greater than 20 x 20, large rectangles or tiles with greater dimensional thickness than normal. Back buttering tiles of this nature in the installation process will also assure proper coverage for bonding.

Use of a latex modified thin-set is recommended for installation.

Special care should be taken when grouting with dark pigmented colors. A grout release is recommended to prevent finely powdered pigments from lodging in the pores of the surface. Use of a latex modified thinset is recommended for installation.

Water, oil, grease, etc. create slippery conditions. Floor applications with exposure to these conditions require extra caution in product selection. Not for use on ramps.

For additional information, refer to "Factors to Consider" at <http://americanolean.com/factors-to-consider.cfm>.

Since there is shade variation in all fired ceramic products, the tile and trim supplied for your particular installation may not match these samples. Final selection should be made from actual tiles and trim and not from tile and trim samples or color reproductions. Manufactured in accordance with ANSI A137.1 standards.



PRE-CONSUMER RECYCLED MATERIALS



TRU-EDGE



EXTERIOR PRODUCT



Naturally, many of our products can help you earn LEED™ credits. Visit [aogreenworks.com](http://aogreenworks.com) for detailed information.



AMERICAN OLEAN®  
FREEDOM OF EXPRESSION™

[americanolean.com](http://americanolean.com)

888.AOT.TILE

©2013 American Olean (10/13)