

Legacy Glass™



Glass wall tile



Legacy Glass™

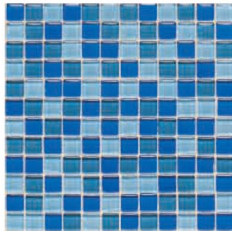
Nothing says style and sophistication quite like colored glass tiles. Legacy Glass boasts a rare look that is equally at home in both contemporary and Old World settings. From 1" x 1" squares to 2" x 4" brick joints, this stunning tile features a truly unique array of sizes and colors. And while at first glance, it may seem as if this tile is suited ideally for today's contemporary designs, don't be quick to discount its use in perhaps more unexpected applications.

Blends

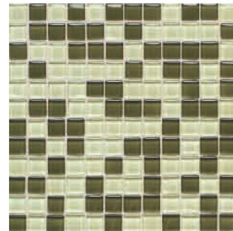
1" x 1" Mosaic Blends



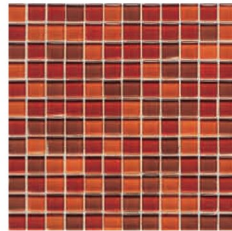
Black Blend LG22 ■



Blue Blend LG20 ■



Green Blend LG21 ■



Red Blend LG23 ■



Sand Blend LG43 ■



Desert Blend LG40 ■

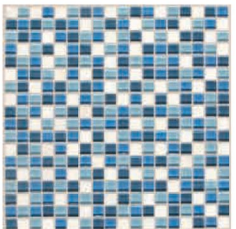


Earth Blend LG41 ■

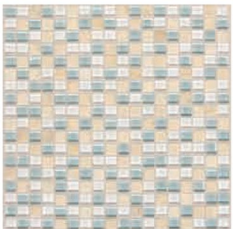


Smokey Blend LG42 ■

5/8" x 5/8" Glass & Natural Stone Mosaic Blends



Ocean Blend LG44 ●



Arctic Blend LG45 ●



Tannery Blend LG46 ●



Wheat Field Blend LG47 ●



Jungle Blend LG49 ●



Mountain Blend LG48 ●

Field Tile





Blend Components

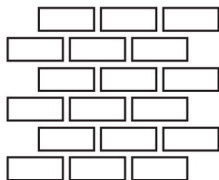
Blend	Components / Usage
Black Blend LG22 1" x 1"	Pearl LG01, 33%; Flint LG09, 33%; Slate LG10, 34%
Blue Blend LG20 1" x 1"	Powder LG06, 33%; Wedgewood LG07, 33%; Cobalt LG08, 34%
Green Blend LG21 1" x 1"	Cyprus LG03, 50%; Celedon LG03, 50%
Red Blend LG23 1" x 1"	Coral LG13, 33%; Auburn LG14, 33%; Copper LG12, 34%
Sand Blend LG43 1" x 1"	Willow LG24, 33%; Chamois LG27, 33%; Dune LG25, 34%
Desert Blend LG40 1" x 1"	Maple LG36, 25%; Leather LG32, 25%; Camel LG26, 25%; Willow LG24, 25%
Earth Blend LG41 1" x 1"	Cyprus LG04, 25%; Chamois LG27, 25%; Sable LG05, 25%; Sage LG35, 25%

Blend	Components / Usage
Smokey Blend LG42 1" x 1"	Carbon LG31, 25%; Mink LG37, 25%; Pewter LG28, 25%; Cyprus LG04, 25%
Ocean Blend LG44 5/8" x 5/8"	Dusk LG34, 25%; Powder LG06, 25%; Wedgewood LG07, 25%; Volakas Stone, 25%
Arctic Blend LG45 5/8" x 5/8"	Pearl LG01, 33%; Moonlight LG15, 33%; Creme Mix Stone, 34%
Tannery Blend LG46 5/8" x 5/8"	Willow LG24, 20%; Emperador Dark, 40%; Emperador Light, 40%
Wheat Field Blend LG47 5/8" x 5/8"	Maple LG36, 25%; Dune LG25, 25%; Leather LG32, 25%; Noce Travertino, 25%
Jungle Blend LG49 5/8" x 5/8"	Mink LG37, 25%; Willow LG24, 25%; Sage LG35, 25%; Emperador Dark & Light, 25%
Mountain Blend LG48 5/8" x 5/8"	Slate LG10, 33%; Flint LG09, 33%; Nero Marquina Marble, 34%

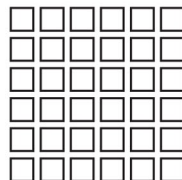
SIZES


1/2" x 6" Liner
(1/2" x 6" nominal)
(1.3 cm x 15.2 cm nominal)

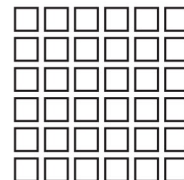

4 1/4" x 4 1/4" Field Tile
(4 1/4" x 4 1/4" nominal)
(10.8 cm x 10.8 cm nominal)



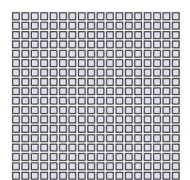
2" x 4 1/4" Field Tile
(mesh-mounted)
(2 1/8" x 4 1/4" nominal)
(5.5 cm x 10.8 cm nominal)



2" x 2" Field Tile
(mesh-mounted in 1 sq. ft. sheets)
(1 7/8" x 1 7/8" nominal)
(4.8 cm x 4.8 cm nominal)



1" x 1" Field Tile
(mesh-mounted in 1 sq. ft. sheets)
(15/16" x 15/16" nominal)
(2.4 cm x 2.4 cm nominal)



5/8" x 5/8" Glass and
Natural Stone Blend Tile+
(mesh-mounted 1 sq. ft. sheets)
(9/16" x 9/16" nominal)
(1.4 cm x 1.4 cm nominal)

TRIM

No trim available

Tile Thickness: 3/16" Recommended grout joint: 1/8"

■ Shade Variation: Low

information

applications

	Residential	Light Commercial	Commercial
Floors†			
Walls/Backsplashes	X	X	X
Countertops			
Pool Linings*	X	X	X

- Suitable for exterior walls in freezing and non-freezing climates when proper installation methods are followed.
- Not for use on ramps.

* 5/8" x 5/8" Glass and Stone Blends are not suitable for pool linings.

For additional information, refer to "Factors to Consider" at www.americanolean.com/ResidentialFactors

price structure

Prestige

Preferred

Stylish and elegant looks. Each tile is created through traditional firing processes and glaze techniques.

Premium

Sophisticated visuals and detailed surfacing. A process of multiple glazes results in an attractive, cultured surface.

Premier

Inherent visual color and depth. A complex process of design brings out the rich, more upscale texture and look of elegant porcelain as well as a variety of other tiles.

Prestige

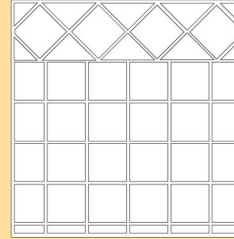
Natural characteristics and realistic attributes. Captures the inherent beauty of natural stone. Highly complex design techniques are also applied to rich porcelains, unique glasses and other materials to create surfaces with distinctive physical and natural qualities.

performance characteristics

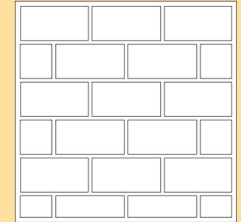
Wet	C.O.F. Dry	Moisture Absorption	Breaking Strength	MOH's	Chemical Resistance
n/a	n/a	<0.01%	>100 lbs.	4.0	Resistant

This tile meets or exceeds ANSI A137.1 standards

patterns



Grid pattern with diamond border



Brick pattern

cleaning procedures

- Remove loose dust and dirt with a damp cloth or a sponge
- Use a neutral, non-abrasive cleaner suitable for glass tile
- Remove cleaning solution with a clean, damp sponge or mop
- Do not use scouring pads, steel wool, sandpaper or other abrasive products as scratching may occur.

special notes

Since there is shade variation in all fired products, the tile and trim supplied for your particular installation may not match these samples. Final selection should be made from actual tiles and trim and not from tile and trim samples or color reproductions.

Gloss and Stone Blends are factory pre-sealed, but should be re-sealed regularly as part of normal maintenance.

Legacy Glass in Sable 2" x 4 1/4" Brick and 1/2" x 6" Liner shown on wall. Sable 1" x 1" and 1/2" x 6" Liner shown with Tumbled Stone Botticino. 4 1/4" x 4 1/4" in shower and on floor.