



Delhi Modular



7589 Indigo



7843 Camel



7858 Khaki



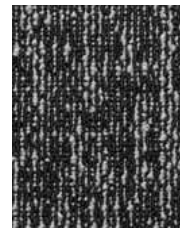
7878 Taupe



7885 Chocolate



7949 Slate



7967 Charcoal



7979 Ebony

PRODUCT SPECIFICATIONS

Style NameDelhi Modular
 Style NumberBT225
 CollectionCity by City
 BrandBigelow
 Product TypeModular
 Minimum Sq. Yd.....No minimum
 ConstructionTufted
 Surface Texture.....Textured Patterned Loop
 Gauge1/12 (47.00 rows per 10 cm)
 Density.....4909
 Weight Density73,635
 Stitches Per Inch.....8.5 (33.46 per 10 cm)
 Finished Pile Thickness......110" (2.79 mm)
 Dye Method.....Solution Dyed
 Backing Material.....EcoFlex ICT

Fiber TypeColorstrand® SD Nylon
 Face Weight.....15.0 oz. per sq. yd. (509 g/m²)
 Pattern RepeatNot Applicable
 Size/Width24" x 24" (.6096 m x .6096 m)
 Soil Release TechnologySentry Plus
 Installation Method.....Quarter Turn, Vertical Ashlar
 Indoor Air QualityGreen Label Plus 1098
 Foot Traffic Recommendation TARR..Heavy
 NSF 140.....Gold
 StaticAATCC-134 Under 3.5 KV
 FlammabilityASTM E 648 Class 1 (Glue Down)
 Smoke DensityASTM E 662 Less than 450
 WarrantiesLifetime Limited Modular Warranty,
 Lifetime Limited Colorfastness to Light, 10 Year Limited Colorfastness to
 Atmospheric Contaminants, 10 Year Stain Warranty, Lifetime Static