



# Crete & Jeogori

Luxury Vinyl Plank

**Durable Style.** Meet the newest luxury vinyl tile from Shaw Commercial Hard Surface. Crete and Jeogori are inspired by aged leather, industrial stained concrete and fabric used in the luxurious silk jeogori. Tiles are constructed with high performance raw materials and feature our exclusive ExoGuard™ quartz-enhanced urethane finish to withstand heavy traffic. The elegant visuals of Crete and Jeogori raise the bar for the new generation of LVT from Shaw Commercial Hard Surface—where flooring makes a statement of durability *and* design.

## Crete & Jeogori

Evoking industrial ambiance, we've infused the Crete palette with warm neutrals and subtle modeling reminiscent of concrete and vintage leather. The woven appearance of Jeogori draws inspiration from the traditional, South Korean garment and includes fabric elements to create surface interest. In select colors, metallic striations accentuate the pattern for a chic upgrade to the traditional linen visual. Both are offered in an 18" tile format and can be installed in tandem with the Uncommon Ground collection for increased design potential.



Style: Jeogori | 0215V  
Color: Fiber | 90720



## Durable Style.

- ExoGuard™ Quartz Enhanced Urethane finish and 20 mil commercial wear layer for performance in heavy commercial traffic
- 3 mm thickness is more forgiving over uneven subfloors
- Polish is optional for hassle-free maintenance
- Jeogori pattern emulates luxurious fabric used in traditional Korean dress and features enhanced surface texture
- Crete offers a fresh take on the industrial aesthetic—inspired by vintage leather and stained concrete
- Can be used with Uncommon Ground wood visuals for a modern, edgy pairing
- Advanced engineering using innovative raw materials for a safer, stronger construction
- FloorScore® certified for low VOCs

Cover:  
Style: Uncommon Ground | 0188V  
Color: Telluride | 02540

Style: Crete | 0203V  
Color: Industrial | 03520

Inside:  
Style: Jeogori | 0215V  
Color: Fiber | 90720

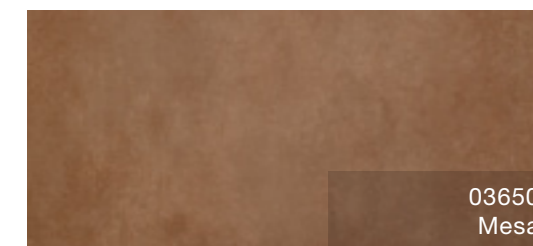
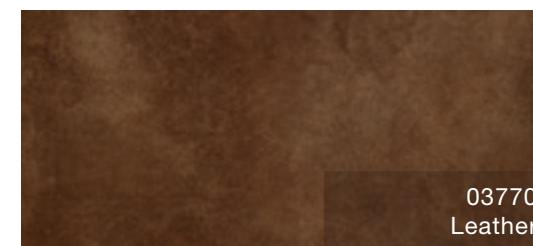
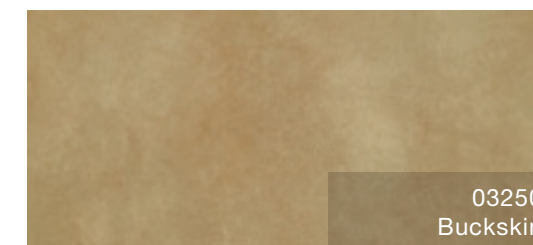
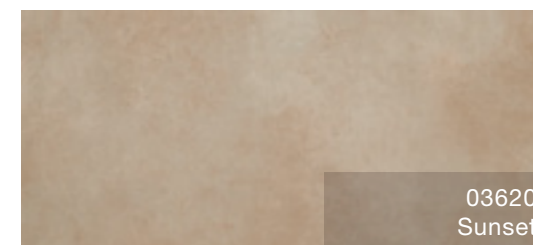
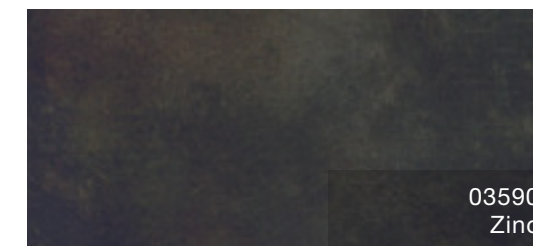
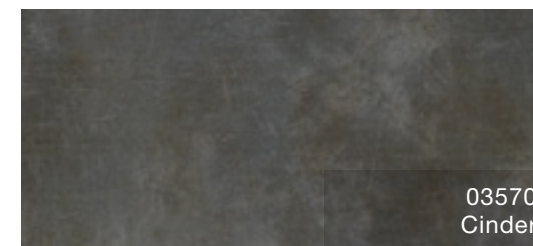
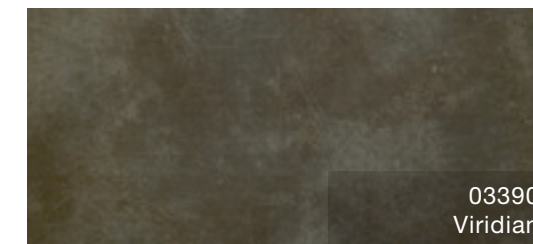
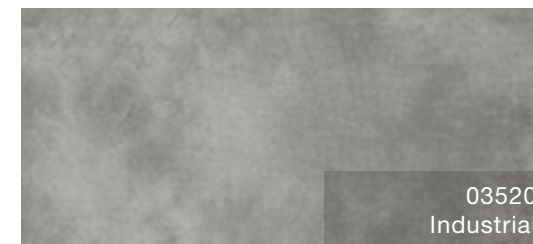
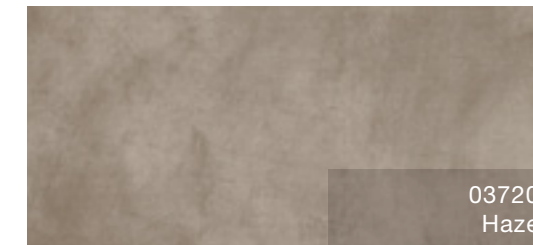
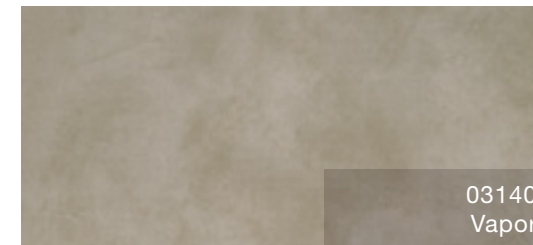
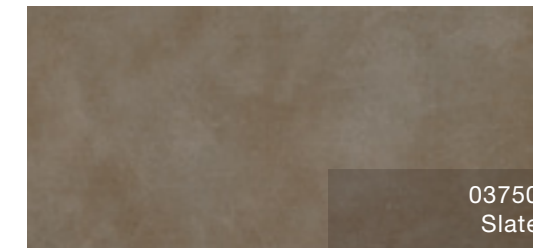
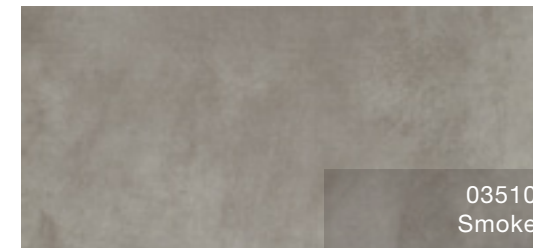
**Durable Style.** Meet the newest luxury vinyl tile from Shaw Commercial Hard Surface. Crete and Jeogori are inspired by aged leather, industrial stained concrete and fabric used in the luxurious silk jeogori. Tiles are constructed with high performance raw materials and feature our exclusive ExoGuard™ quartz-enhanced urethane finish to withstand heavy traffic. The elegant visuals of Crete and Jeogori raise the bar for the new generation of LVT from Shaw Commercial Hard Surface—where flooring makes a statement of durability *and* design.

## Crete & Jeogori

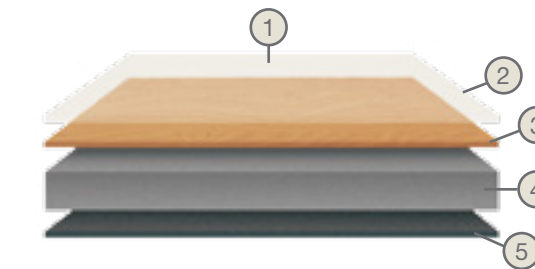
Evoking industrial ambiance, we've infused the Crete palette with warm neutrals and subtle modeling reminiscent of concrete and vintage leather. The woven appearance of Jeogori draws inspiration from the traditional, South Korean garment and includes fabric elements to create surface interest. In select colors, metallic striations accentuate the pattern for a chic upgrade to the traditional linen visual. Both are offered in an 18" tile format and can be installed in tandem with the Uncommon Ground collection for increased design potential.



### Crete

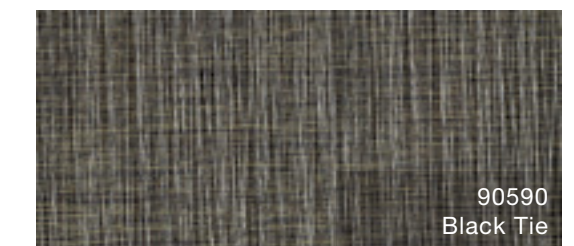
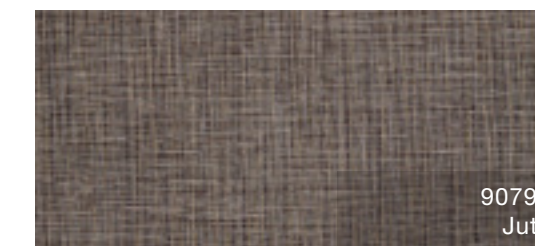
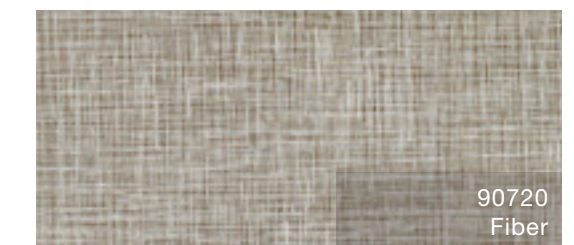
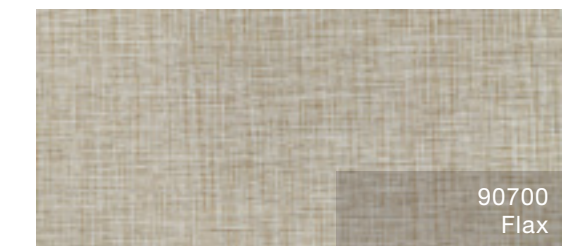
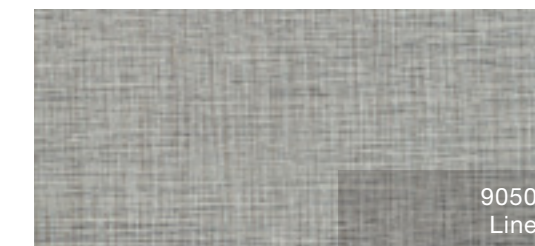
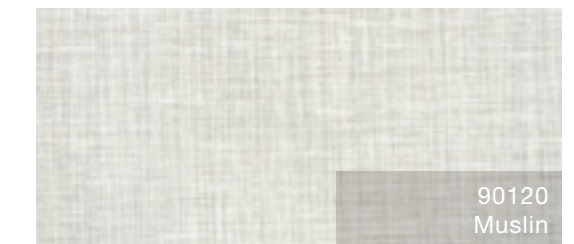


**Construction** Crete and Jeogori feature our exclusive ExoGuard™ quartz-enhanced urethane finish, to protect against commercial traffic and offer flexible, polish-optional maintenance. The three millimeter thickness is more forgiving over uneven subfloors, and the backing layer ensures dimensional stability. Updated patterns are printed with digital imaging technology for maximum clarity.



1. ExoGuard™ Quartz Enhanced Urethane
2. Clear Wear Layer
3. High Resolution Image Layer
4. Commercial Flooring Base
5. Commercial Backing Base

### Jeogori



To order samples, please call 1.800.241.2073 or visit our website at [www.shawhardsurface.com](http://www.shawhardsurface.com)

## Product Specifications

Style Name / Number	Crete / 0203V
	Jeogori / 0215V
Construction	High Performance Luxury Vinyl Tile
Class / ASTM F 1700	Class III Printed Film Vinyl Tile, Type A (smooth), Type B (embossed)
Wear Layer Thickness	20 mil or 0.020" (0.5 mm)
Overall Thickness	3 mm or nominal 1/8"
Nominal Dimensions	18" wide, 18" long
Actual Size	
Width:	17.72" or 450 mm
Length:	17.72" or 450 mm
Backing Class	Commercial Grade
Finish	ExoGuard™ Quartz Enhanced Urethane
Installation Method	Glue Down
Recommended Adhesive	Shaw 4100 or S150
<b>Packaging</b>	
Square Feet per Carton	34.88 sf
Pieces per Carton	16 pcs
Weight per Carton	37.84 lbs
Cartons per Pallet	52 cartons
Pallets per Truckload	18 pallets
<b>Testing</b>	
Slip Resistance / ASTM D 2047	ADA compliant
Residual Indentation / (modified) ASTM F 970	1500 psi
Flexibility / ASTM F 137	Passes
Resistance to Heat / ASTM F 1514	Passes
Resistance to Light / ASTM F 1515	Passes
Resistance to Chemicals / ASTM F 925	Passes
Antibacterial Activity / AATCC 147	Passes
Radiant Flux / ASTM 648	>0.45 watts/cm <sup>2</sup> , NFPA Class I
Smoke Density / ASTM E 662	Passes, <450
<b>Warranty</b>	
	10 year limited commercial wear warranty
	5 year under bed warranty when installed with Shaw 4100 or S150 adhesive
<b>Environmental</b>	
Indoor Air Quality	FloorScore® certified
LEED Scoreboard	EQ4.1, EQ4.3