



# THEORETICAL™

COLORBODY™ PORCELAIN & GLAZED CERAMIC MOSAIC WITH REVEAL IMAGING®

FLOOR



AMERICAN OLEAN®  
PROVEN IN TILE™

AMERICANOLEAN.COM

# THEORETICAL™

With a nod to minimalist simplicity, Theoretical by American Olean is inspired by the modern, industrial look of cement. Reimagined with subtle graphic variation for added richness and depth, its versatility makes it perfect for commercial or urban residential applications. Available in 10 neutral hues to complement a range of color palettes and patterns, Theoretical is the perfect foundation for endless design options.

Photo features Theoretical Absolute Brown in 12 x 24 on the floor.

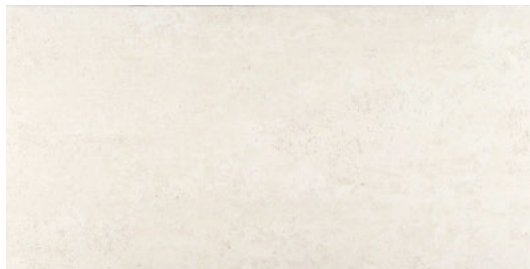


# THEORETICAL™

COLORBODY™ PORCELAIN & GLAZED CERAMIC MOSAIC WITH REVEAL IMAGING®

## FLOOR TILE

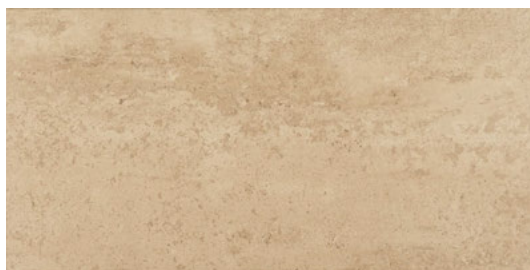
---



WHIMSICAL WHITE TH90



IDEAL BEIGE TH91



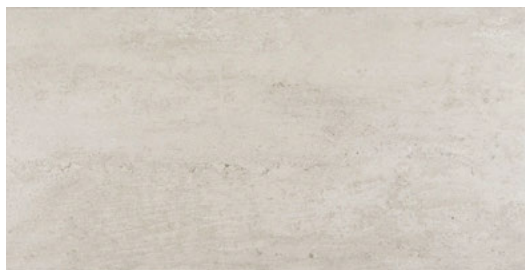
TRUE BEIGE TH92



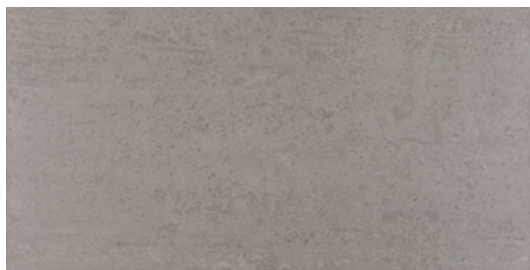
ABSOLUTE BROWN TH93



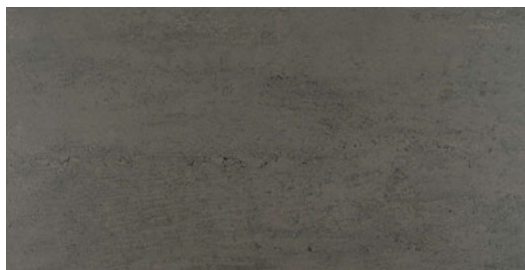
FUNDAMENTAL GRAY TH94



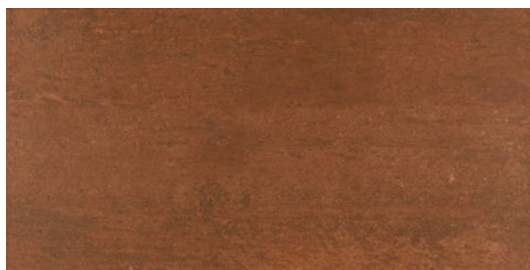
LOGICAL GRAY TH95



CREATIVE GRAY TH96



IMAGINATIVE GRAY TH97



DEEP COPPER TH98



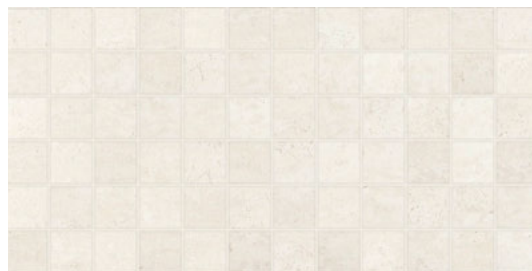
ABSTRACT BLACK TH99

# THEORETICAL™

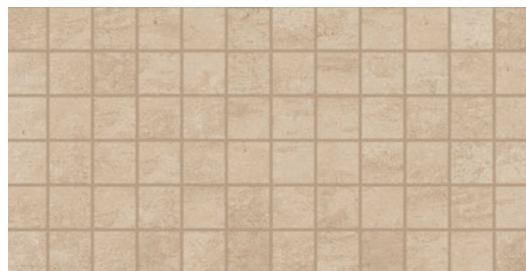
COLORBODY™ PORCELAIN & GLAZED CERAMIC MOSAIC WITH REVEAL IMAGING®

## 2 x 2 GLAZED CERAMIC MOSAIC

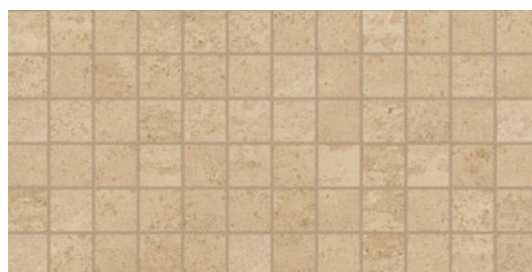
---



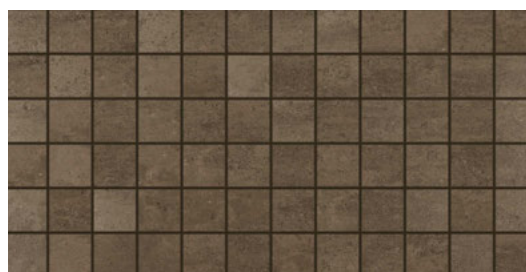
WHIMSICAL WHITE TH90



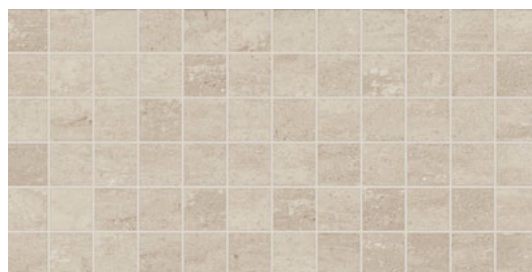
IDEAL BEIGE TH91



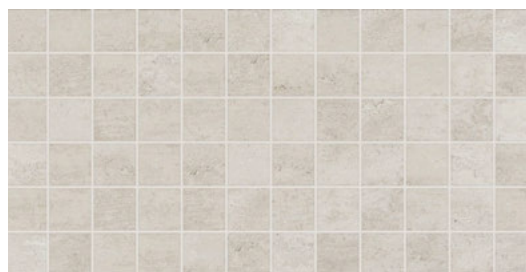
TRUE BEIGE TH92



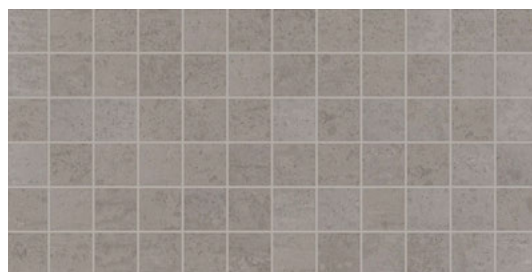
ABSOLUTE BROWN TH93



FUNDAMENTAL GRAY TH94



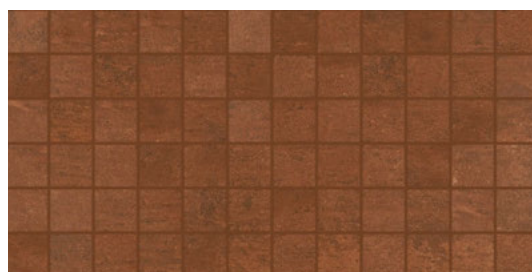
LOGICAL GRAY TH95



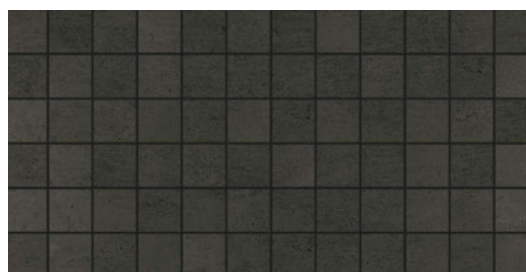
CREATIVE GRAY TH96



IMAGINATIVE GRAY TH97



DEEP COPPER TH98

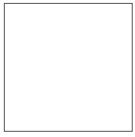


ABSTRACT BLACK TH99

# THEORETICAL™

COLORBODY™ PORCELAIN & GLAZED CERAMIC MOSAIC WITH REVEAL IMAGING®

## SIZES, SHADE VARIATION & PRICING



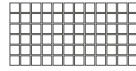
**24 x 24 FIELD TILE**  
(23-5/8" x 23-5/8")  
(59.44 cm x 59.44 cm)



**12 x 24 FIELD TILE**  
(11-5/8" x 23-5/8")  
(29.56 cm x 59.44 cm)



**6 x 24 FIELD TILE\***  
(6" x 23-5/8")  
(14.63 cm x 59.44 cm)



**2 x 2 MOSAIC ■ □**  
(12" x 24" Dot Mounted Sheet)  
(30.48 cm x 60.96 cm Sheet)

- Mosaic tile is dot-mounted on 12 x 24 sheets.
- Ceramic body.
- \* Available via Linear Express



**MEDIUM**  
(V2)

**TILE THICKNESS:** 3/8", 1/4" Mosaic  
**RECOMMENDED GROUT JOINT:**  
1/8" Floor (3/16" when rectangular sizes are used in brick-joint pattern where overlap should not exceed 33%), 1/8" Mosaic  
**RELATIVE PRICING:** Medium

## PERFORMANCE CHARACTERISTICS

	MOISTURE ABSORPTION	BREAKING STRENGTH	MOHS	CHEMICAL RESISTANCE	ABRASION RESISTANCE
Floor	< 0.5%	> 350 lbs.	8.0	Resistant	-N/A-
Mosaic	< 3.0%	> 250 lbs.	8.0	Resistant	4

### CLEANING PROCEDURES

- Remove loose dust and dirt with a damp cloth or sponge
- Use a neutral, non-abrasive cleaner suitable for ceramic tile
- Remove cleaning solution with a clean, damp sponge or mop

### INSTALLATION METHODS BACKING MATERIALS

- Concrete
- Exterior grade plywood
- Cementitious backer board

### SETTING

- Latex modified thin-set
- Epoxy

### GROUTING

- Sanded grout
- Epoxy grout

## TRIM



**BULLNOSE**  
P43C9  
3 x 12



**COVE BASE**  
P36C9TB  
6 x 12



**COVE BASE CORNER**  
PC36C9TB  
1 x 6

Bullnose and cove trim are intended to coordinate with floor field tile in the standard 90-degree installation position.

## FLOOR APPLICATIONS

	TARGET DCOF WET	SUITABLE
Dry & Level - Interior	N/A	●
Wet & Level - Interior	≥ 0.42	●
Exterior Applications; Pool Decking & Other Wet Areas with Minimal Footwear	≥ 0.60	○
Ramps & Inclines	≥ 0.65	○

A DCOF value of ≥ 0.42 is the new standard for tiles specified for commercial application in standard A137.1-2012, Section 9.6. It replaces the SCOF value of ≥ 0.60 referenced in ASTM C1028. For more information on the correlation between the two values and about the DCOF AcuTest™, visit [www.americanolean.com/dcof](http://www.americanolean.com/dcof).

## OTHER APPLICATIONS

	SUITABLE
Walls/Backsplashes	●
Countertops	●
Pool Linings	●*

### APPLICATION NOTES:

\* 2 x 2 mosaic tile only

Floor tile suitable for exterior applications in freezing and non-freezing climates when proper installation methods are followed.

Mosaics and cove trim suitable for exterior applications in non-freezing climates only when proper installation methods are followed.

Cover photo features Theoretical Creative Gray in 12 x 24 on the floor and Bricktown Arctic Bend in 2 x 8 on the wall.

## NOTES

Since there is shade variation in all fired ceramic products, the tile and trim supplied for your particular installation may not match these samples. Final selection should be made from actual tiles and trim and not from tile and trim samples or color reproductions. Manufactured in accordance with ANSI A137.1 standards.

**SPECIAL INSTALLATION REQUIREMENT:** For proper bonding, medium bed mortar should be utilized in installing tiles with a dimensional length size greater than 20 x 20, large rectangles or tiles with greater dimensional thickness than normal. Back buttering tiles of this nature in the installation process will also assure proper coverage for bonding.

A grout release is recommended prior to grouting to prevent finely powdered pigments from lodging in the pores of the surface. Use of a latex modified thinset is recommended for installation.

Water, oil, grease, etc. create slippery conditions. Floor applications with exposure to these conditions require extra caution in product selection. Not for use on ramps.

All or select items within this series are made in the USA.  
For more information visit [www.americanolean.com](http://www.americanolean.com).

For additional information, refer to "Factors to Consider" at <http://americanolean.com/factors-to-consider.cfm>.



PRE-CONSUMER RECYCLED MATERIALS



MADE IN THE U.S.A.



REVEAL IMAGING®



TRU-EDGE™



CERTIFIED PORCELAIN TILE



Naturally, many of our products can help you earn LEED™ credits.

888.AOT.TILE

©2016 AMERICAN OLEAN



AMERICAN OLEAN®  
PROVEN IN TILE™